



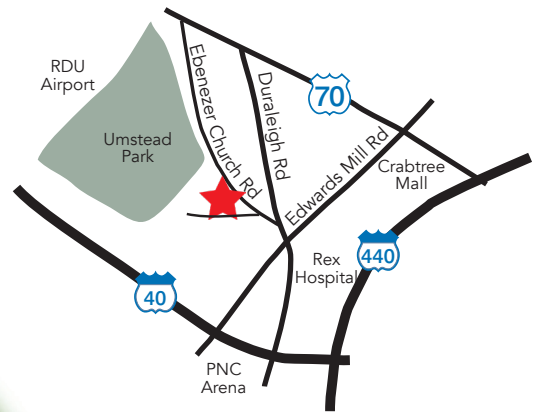
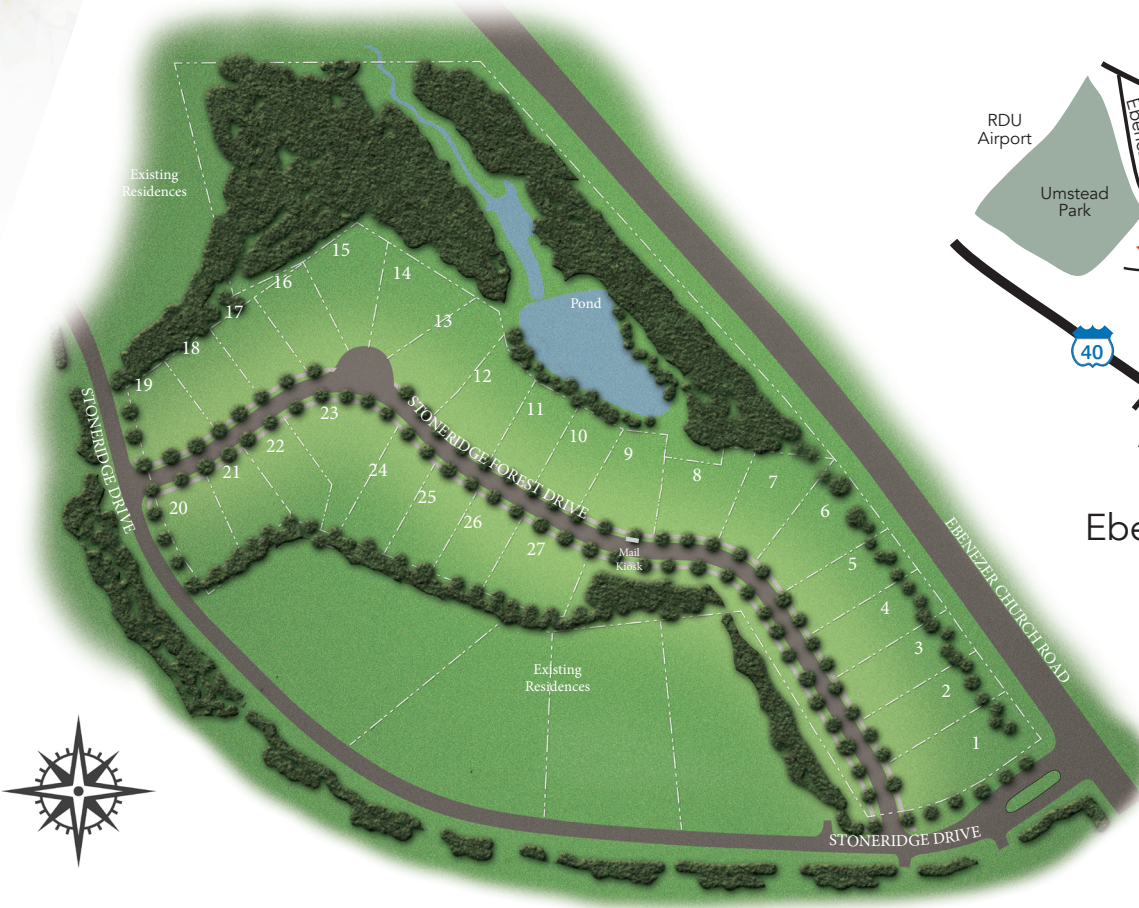
LAND IN THE PERFECT PLACE





# Grand Opening

Priced from the \$900's – \$1 Million + | Raleigh, NC



Ebenezer Church Road,  
1 Mile South of  
Umstead Park



## LIMITED OPPORTUNITIES TO BUILD A NEW HOME IN THE HEART OF RALEIGH

Robuck Homes invites you reinvigorate your lifestyle from the inside out! Located in the heart of Raleigh, Stoneridge Place offers the perfect blend of the latest home designs with the splendor of outdoor living and exploration. Envision your home...in a charming urban community, with sidewalk-lined street, in a sought-after area of Raleigh, close to everything!

[DISCOVERSTONERIDGE.COM](http://DISCOVERSTONERIDGE.COM)

Mary Ann Kohn, Sales Associate

919-926-5507 // [StoneridgePlace@FMBnewhomes.com](mailto:StoneridgePlace@FMBnewhomes.com)

Ebenezer Church Road & Stoneridge Drive, Raleigh NC 27612

Site Plan is an artist's representation and subject to change. Please refer to recorded map to make homesite selection. 2/21





# NEW HOME DESIGNS FOR *Innovative Living*



15 Exterior Designs // 1st Floor Owner's Suites

Luxury Scullery Kitchen Options // In-Law Suites & Multi-Room Owner's Retreats

Spa-Like Bathrooms // Basement Opportunities

*Land in the Perfect Place*



[DISCOVERSTONERIDGE.COM](http://DISCOVERSTONERIDGE.COM)

Mary Ann Kohn, Sales Associate

919-926-5507 // [StoneridgePlace@FMBnewhomes.com](mailto:StoneridgePlace@FMBnewhomes.com)

Ebenezer Church Road & Stoneridge Drive, Raleigh NC 27612

Site Plan is an artist's representation and subject to change. Please refer to recorded map to make homesite selection. 2/21

