

The Whitley

WYNDWATER



Modern Farmhouse



Craftsman

WYNDWATER
BY ROBUCK HOMES

**ROBUCK
HOMES** Since 1926

RobuckHomes.com

*All plans, details, and renderings are approximate and subject to change.
Illustrations may not represent finished details. 12/23*

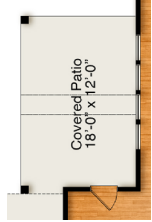
FMB
FONVILLE MORISEY BAREFOOT 

The Whitley

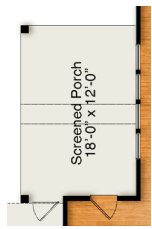
WYNDWATER



Sliding Glass Door at Family



Optional Covered Patio
in lieu of Patio



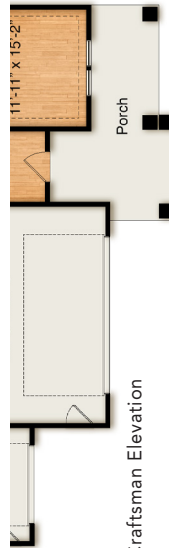
Optional Screened Porch in
lieu of Patio



Modern Farmhouse Elevation



Guest Room in lieu of
Flex Room

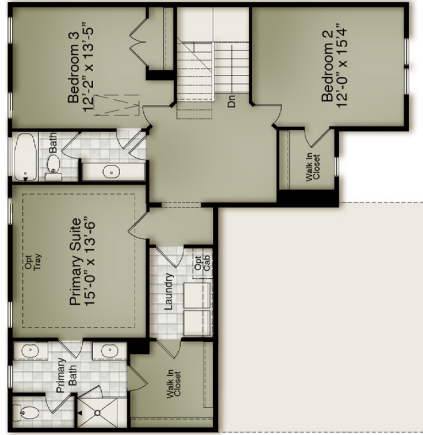


Craftsman Elevation

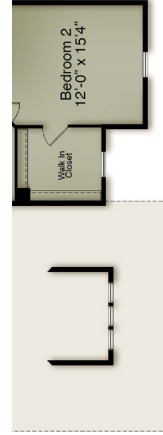
First Floor



Optional Dual Vanity

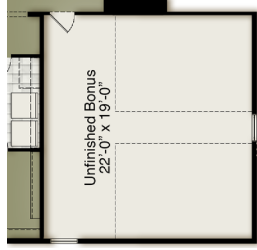


Modern Farmhouse Elevation

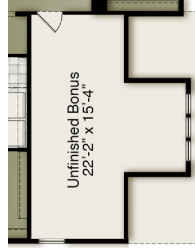


Craftsman Elevation

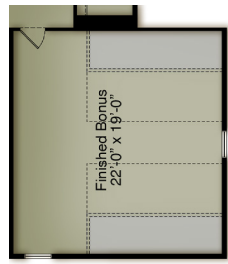
Second Floor



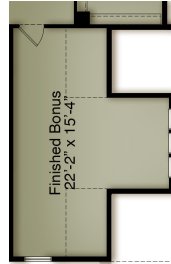
Unfinished Bonus
Modern Farmhouse Elevation



Unfinished Bonus
Craftsman Elevation



Finished Bonus
Modern Farmhouse Elevation



Finished Bonus
Craftsman Elevation



RobuckHomes.com

All plans, details, and renderings are approximate and subject to change. Illustrations may not represent finished details. 12/23

