

The Ellsworth

Alternate Elevations



Country Chic



Modern Farmhouse



The Ellsworth

A Stunning 2-Story Staircase and Foyer

Key Features of Base Plan

- Grand entry foyer with a corner staircase
- Elegant Mahogany front door
- 10 foot ceiling on first floor
- Impressive 8' solid core interior doors throughout first floor
- Elegant formal dining room with a butler's pantry
- Modern tech center for quiet conference calls and classes
- Gourmet kitchen design includes large gathering island with all the latest appliances
- Inviting covered back porch for outdoor living
- Room size walk-in pantry
- Sizeable mud room with convenient drop zone
- Sophisticated owners retreat
- Beautiful Owner's Bath includes a free standing tub

- Large walk in closet with wood shelving
- Upstairs laundry offers extra space for cabinetry and folding area
- The well-designed second floor includes 4 bedrooms, hall bath and buddy bath

Available Luxury Options

- In-law suite with kitchenette
- Scullery kitchen options
- Covered rear porch with cozy fireplace
- Screened back porch with grilling deck
- Tall panel siding glass doors off the family room
- Finished or unfinished 3rd floor
- Basement with bedroom, full bath, theatre room, recreation room, wet bar, storage and patio
- Entertainment bump out

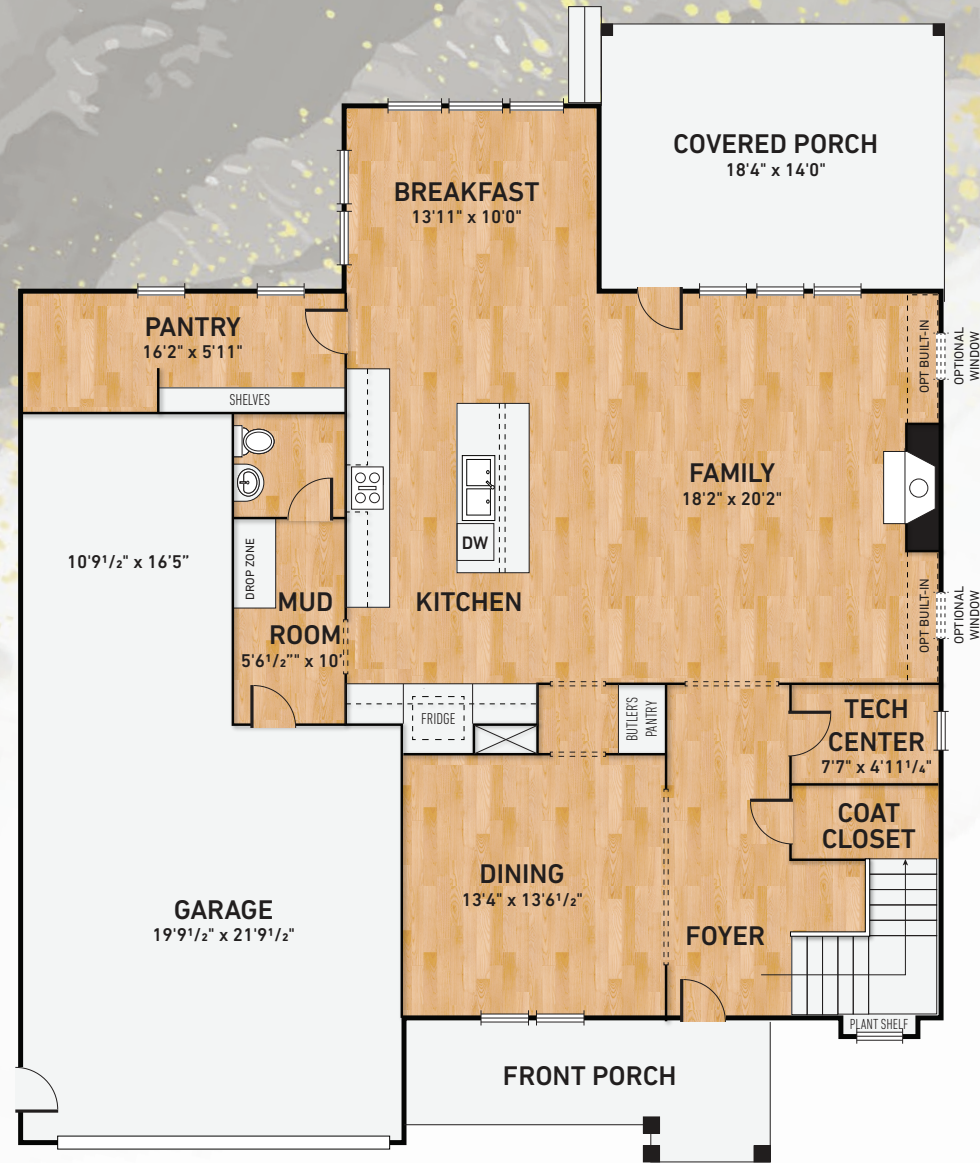


The Ellsworth

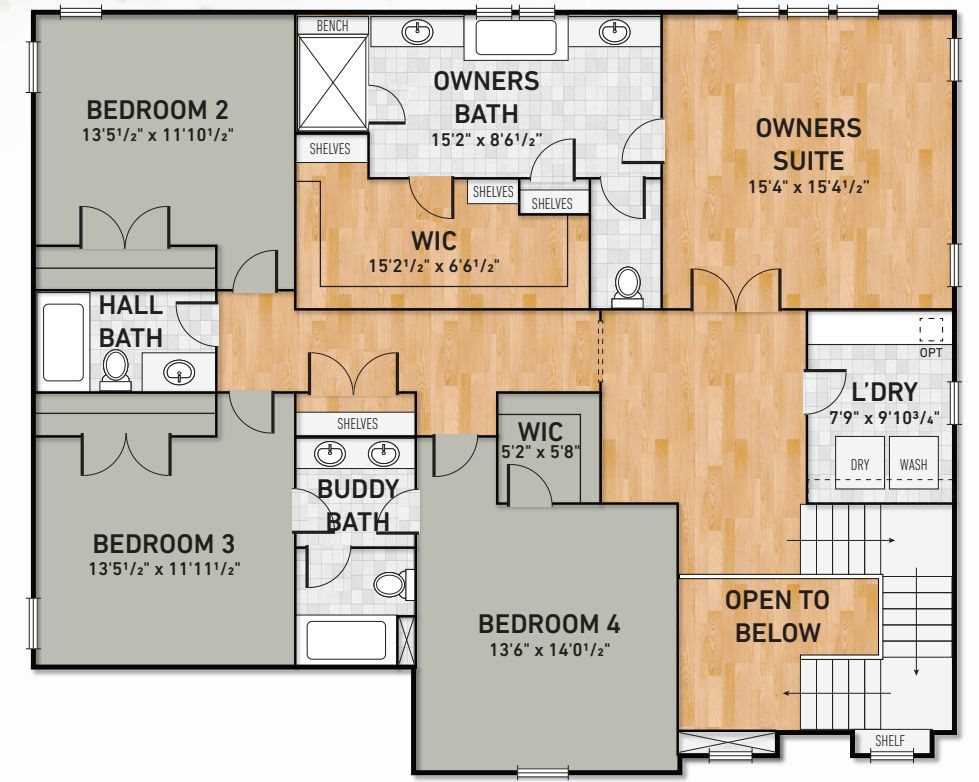


Eastern Seaboard Elevation

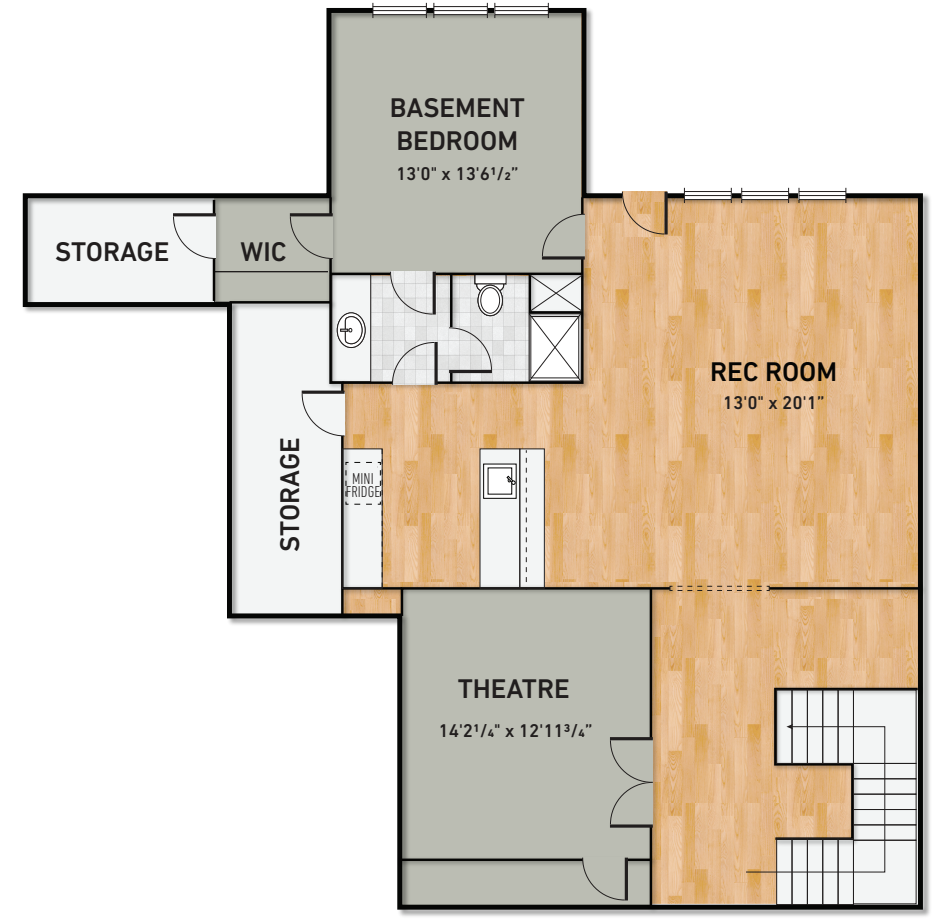
The Ellsworth



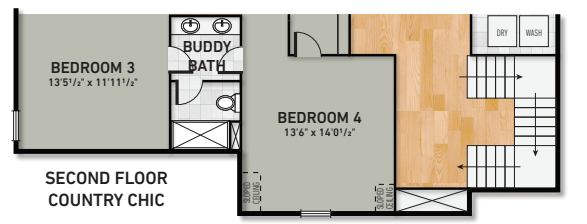
FIRST FLOOR PLAN



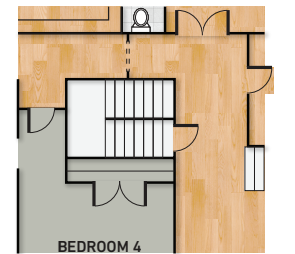
SECOND FLOOR PLAN



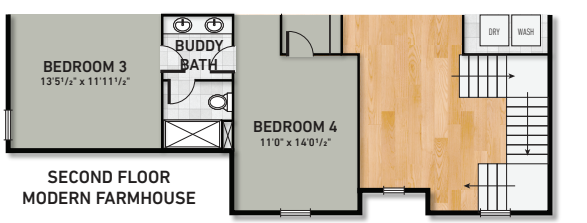
OPTIONAL BASEMENT



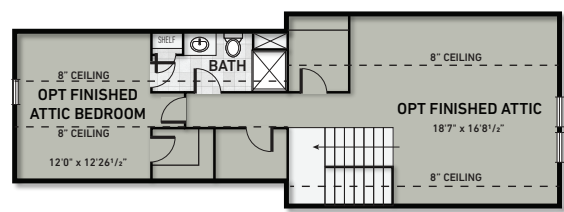
SECOND FLOOR COUNTRY CHIC



OPTIONAL FINISHED OR UNFINISHED WALK-UP



SECOND FLOOR MODERN FARMHOUSE



OPTIONAL FINISHED OR UNFINISHED 3RD FLOOR

www.DiscoverStoneridge.com

*Floors plans, elevations, and options are approximate and subject to change without notice. Images are only for illustrative purposes and not an exact representation of the products, colors, or design. Some items shown are optional and available at an additional cost. Due to differences in printing and monitors, the colors of products may also appear different from those displayed. 5.21