

The Eden Park

Alternate Elevations



Country Chic



Modern Farmhouse



The Eden Park

Designed for Efficient Main-Level Living

Key Features of Base Plan

- Stunning Courtyard design offers beautiful curb appeal
- Welcoming entry foyer
- Elegant mahogany front door
- 10 foot ceiling on the first floor
- Impressive 8' solid core interior doors throughout first floor
- Versatile 1st floor flex room to design as your personal space
- Gourmet kitchen design includes large gathering island with all the latest wonderful appointments
- Spacious walk in pantry
- Sizeable mud room with convenient drop zone
- Generous laundry room with cabinetry
- Luxury owner's suite with private entry
- Beautiful owner's Bath includes a free standing tub

- Charming covered back porch for outdoor living
- The well designed second floor includes 4 bedrooms, hall bath, buddy bath and a perfect size gathering area

Available Luxury Options

- Guest suite in lieu of flex room
- Bedroom 4 & 5 optional layout
- Covered rear porch with cozy fireplace
- Screened back porch with grilling deck
- Tall panel sliding glass doors off the family room
- Generous bonus room over the two or 3 car garage
- Basement with bedroom, full bath, office, theatre room, recreation room, and finished storage.

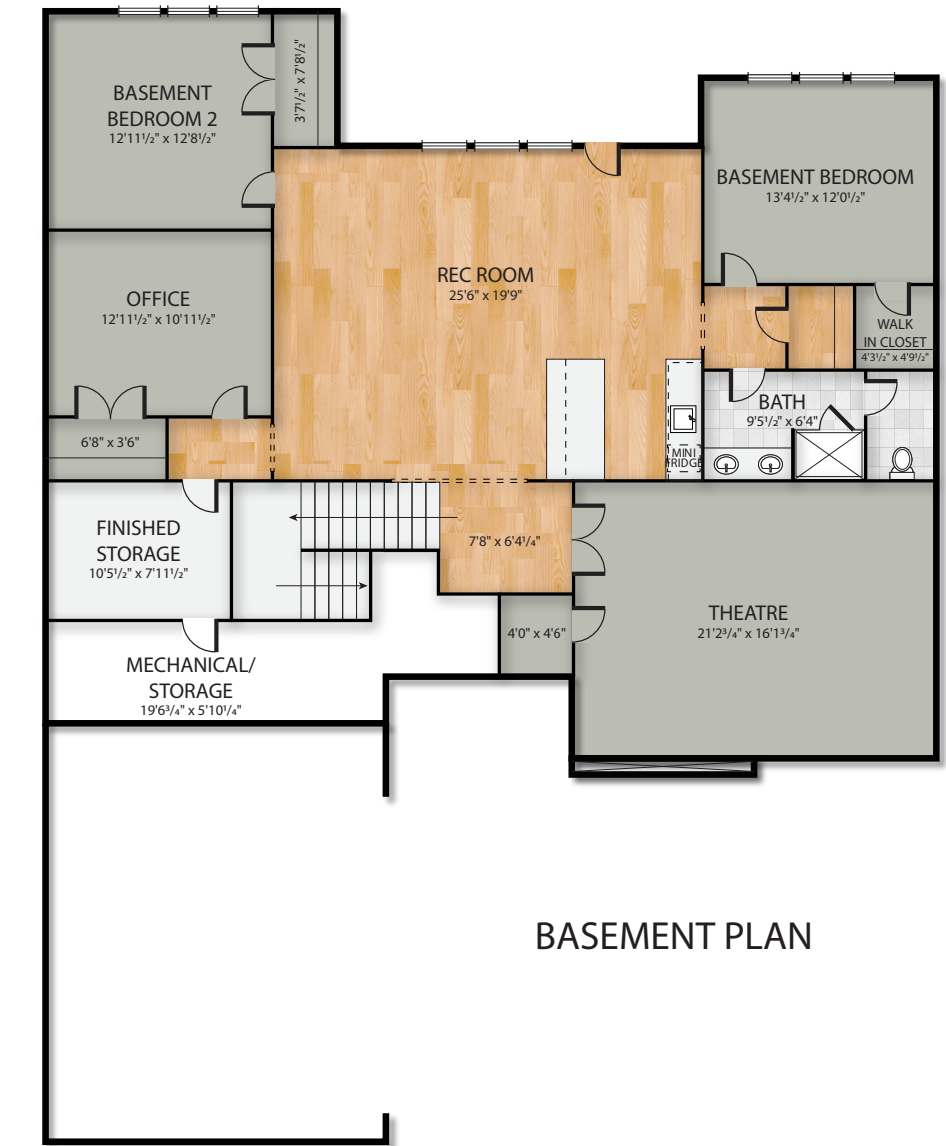
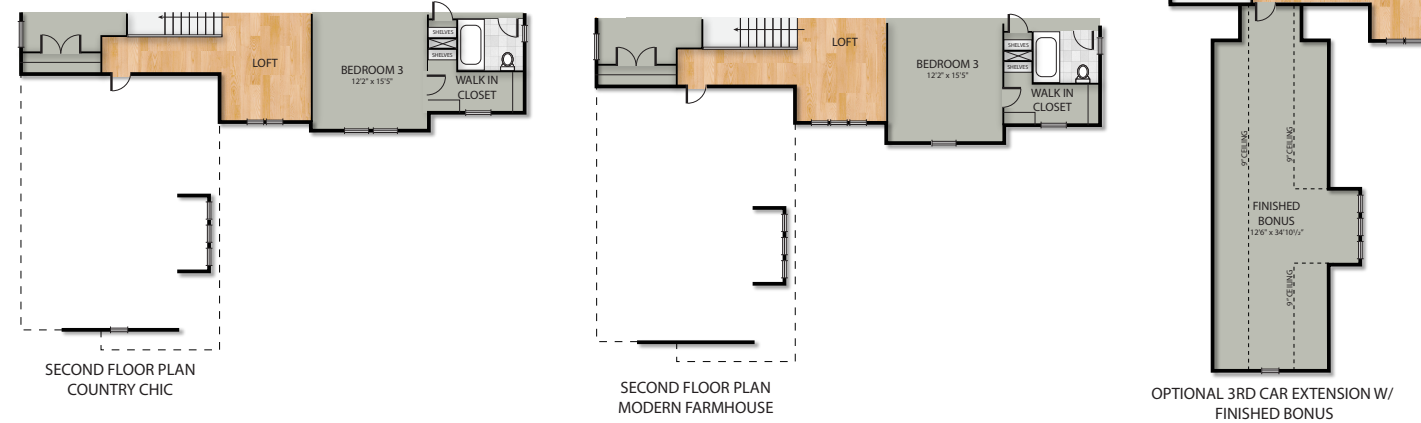
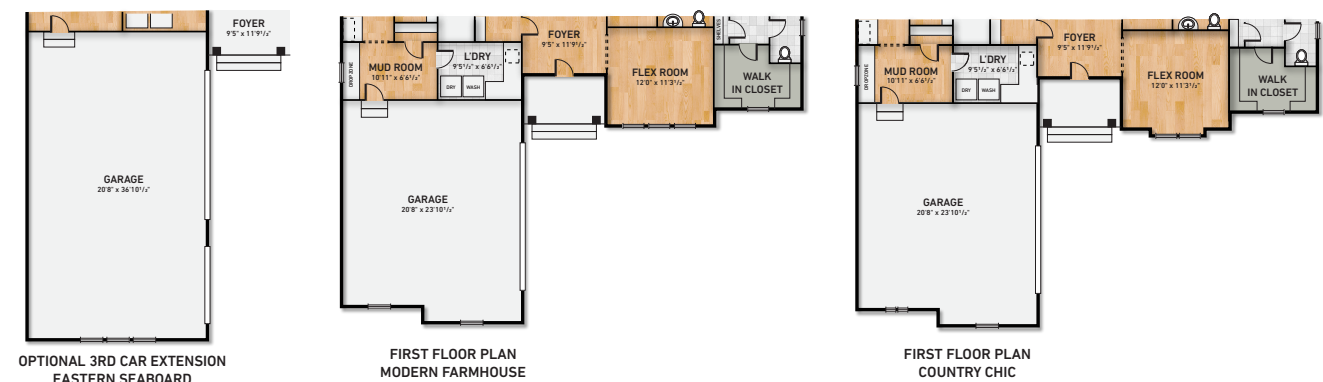
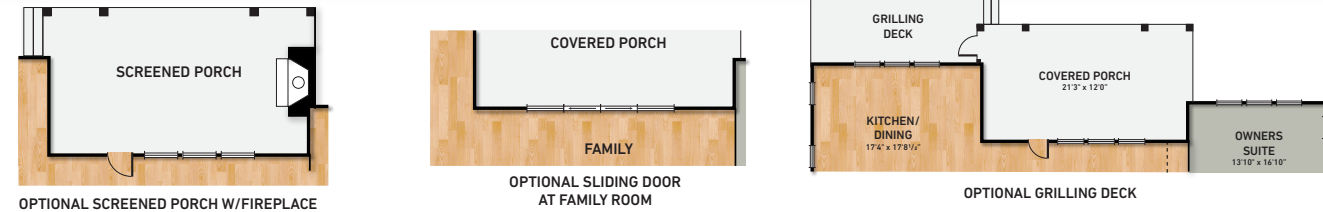


The Eden Park



Eastern Seaboard Elevation

The Eden Park



*Floors plans, elevations, and options are approximate and subject to change without notice. Images are only for illustrative purposes and not an exact representation of the products, colors, or design. Some items shown are optional and available at an additional cost. Due to differences in printing and monitors, the colors of products may also appear different from those displayed. 3.21