

The Umstead

Alternate Elevations



Country Chic

(rendering displays optional 3rd car extension)



Modern Farmhouse

SEAFORTH
PRESERVE

The Umstead

An Entertainer's Dream

Key Features of Base Plan

- Grand entry foyer with wide elegant turned staircase
- Elegant Mahogany front door
- 10 foot ceiling on first floor
- Impressive 8' solid core interior doors throughout first floor
- Versatile flex room to design as your personal space
- Expansive living/dining space lined with rear windows
- Gourmet kitchen design includes wonderful appointments and large gathering island
- Room size walk-in pantry & separate butler's pantry
- Comfortable guest suite with private entrance
- Sizeable mudroom with convenient drop-zone
- A dedicated wing for the owner's suite includes a sitting room for relaxation

- Luxury Owner's bath
- Spacious multi-function laundry room with folding area and cabinets
- Charming screened back porch for outdoor living
- The well designed second floor includes 2 bedrooms, hall bath, buddy bath and bonus room

Available Luxury Options

- In-law suite with kitchenette
- Cozy fireplace addition in flex room
- Screened back porch with grilling deck
- Screened back porch with cozy fireplace
- Tall panel sliding glass doors
- 3rd car garage extension

SEAFORTH
PRESERVE

The Umstead



Eastern Seaboard Elevation

ROBUCK
HOMES *Since 1926*



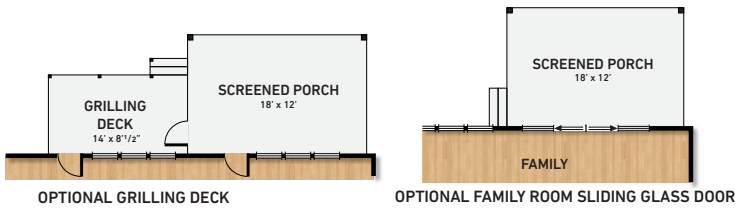
www.RobuckHomes.com

FMB
FONVILLE MORISEY BAREFOOT

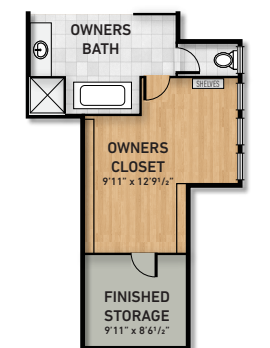
The Umstead



FIRST FLOOR PLAN



SECOND FLOOR PLAN

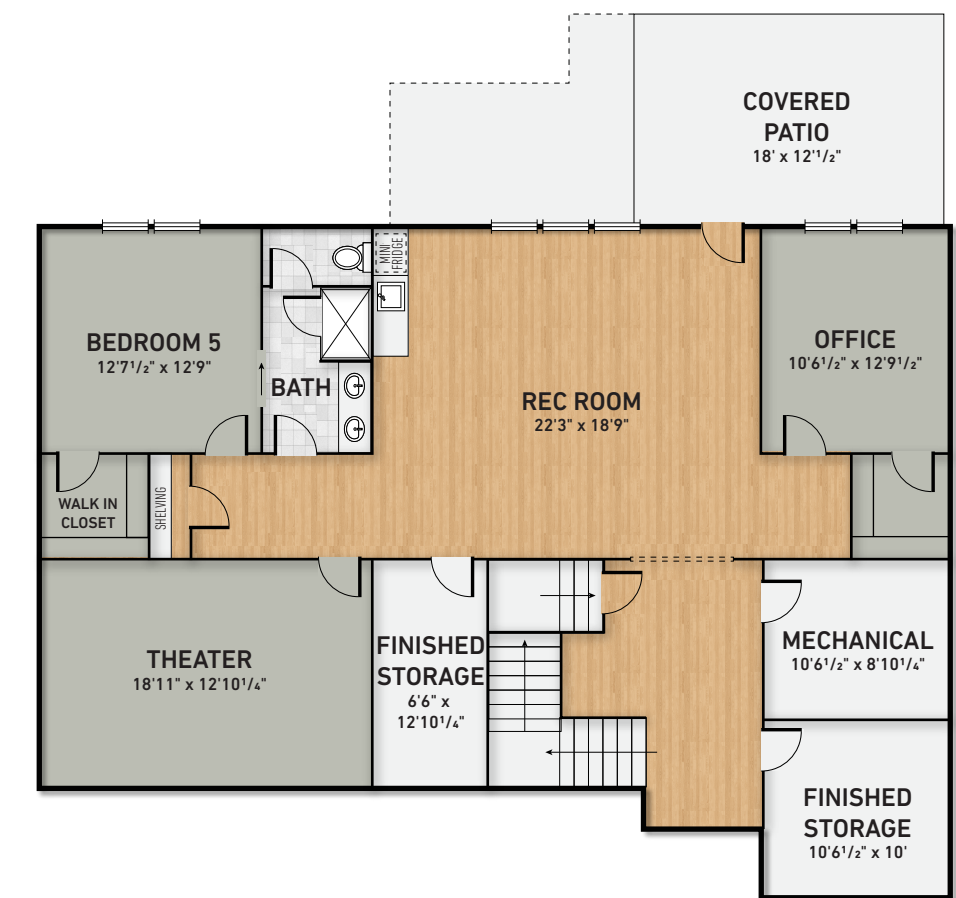


OPTIONAL 3RD CAR EXTENSION



SECOND FLOOR PLAN MODERN FARMHOUSE

SECOND FLOOR PLAN COUNTRY CHIC



BASEMENT PLAN

* Basement Options are not available in Bonterra



www.RobuckHomes.com
* Every precaution has been taken to verify the accuracy of the above details. However, prospective purchasers are advised to make their own inquiries. Builder reserves the right to make substitutions in products and materials of equal or greater value. All items are subject to change without notice. We do not accept responsibility for any errors or omissions. July 2022.

