

The Whitley

BAYLEE RIDGE



Modern Farmhouse



Craftsman

The Whitley

BAYLEE RIDGE

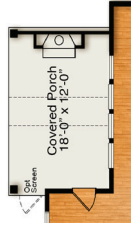


Covered Porch
18'-0" x 12'-0"

Optional Covered Porch
w/ Fireplace



Sliding Glass Door at Family



Opt Patio
Extension
13'-0" x 12'-0"



Two Car
Garage
22'-0" x 22'-8"

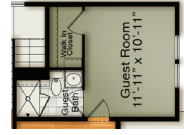
Side Load Garage with Third Car
Garage



Two Car
Garage
22'-0" x 22'-8"

Modern Farmhouse Elevation

Side Load Garage with Third Car
Garage



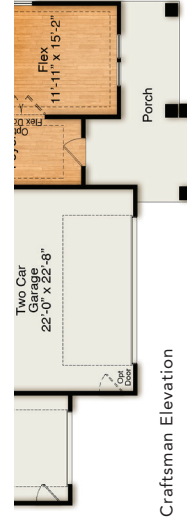
Guest Room with Full
Bath i/o Flex Room

First Floor



Two Car
Garage
22'-0" x 22'-8"

Modern Farmhouse Elevation

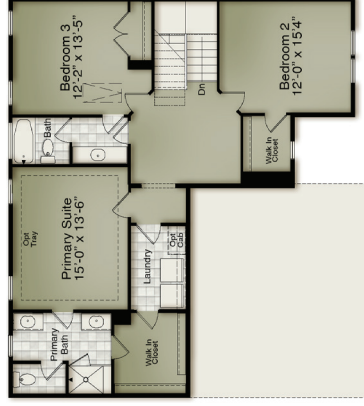


Two Car
Garage
22'-0" x 22'-8"

Craftsman Elevation

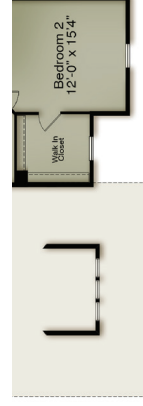


Optional Dual Vanity
in Hall Bath



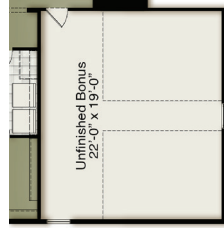
Primary Suite
15'-0" x 13'-6"

Modern Farmhouse Elevation



Bedroom 2
12'-0" x 15'-4"

Craftsman Elevation



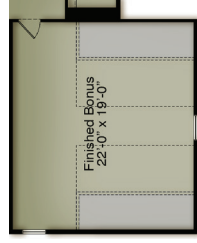
Unfinished Bonus
22'-0" x 19'-0"

Unfinished Bonus
Modern Farmhouse Elevation



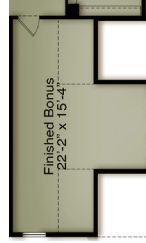
Unfinished Bonus
22'-2" x 15'-4"

Unfinished Bonus
Craftsman Elevation



Finished Bonus
22'-0" x 19'-0"

Finished Bonus
Modern Farmhouse Elevation



Finished Bonus
22'-2" x 15'-4"

Finished Bonus
Craftsman Elevation

Second Floor