

# SEAFORTH LANDING



## Poythress Construction

Homesite 6A – 2318 Seaforth Road

4 BDR | 4.5 BA | 3446 SF  
2.0 Acre Homesite  
1<sup>st</sup> Floor Private Owner's Retreat  
1<sup>st</sup> Floor Guest Suite  
Spacious Rear Porch with Fireplace  
3 Car Garage

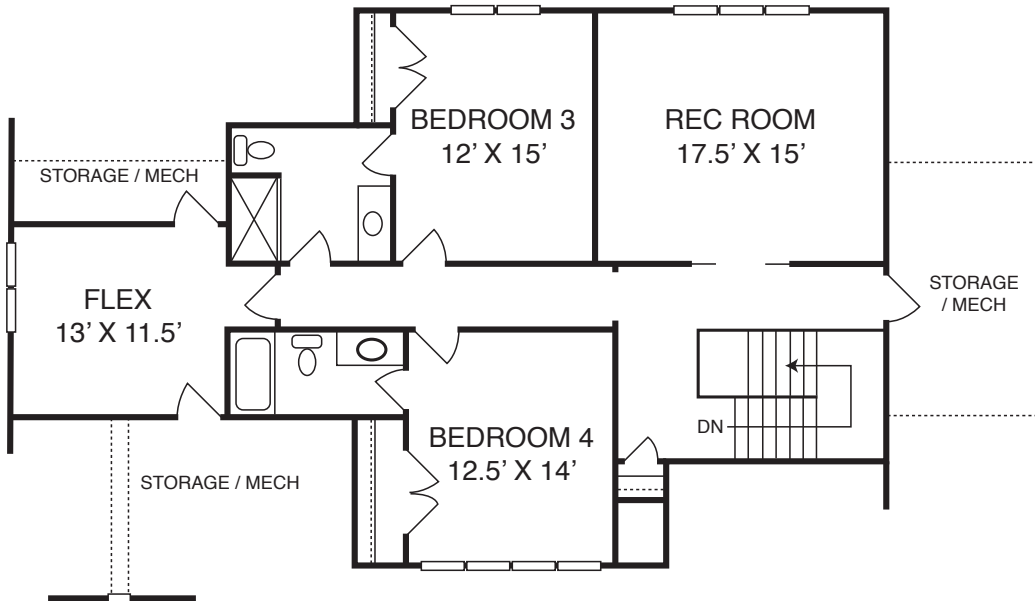
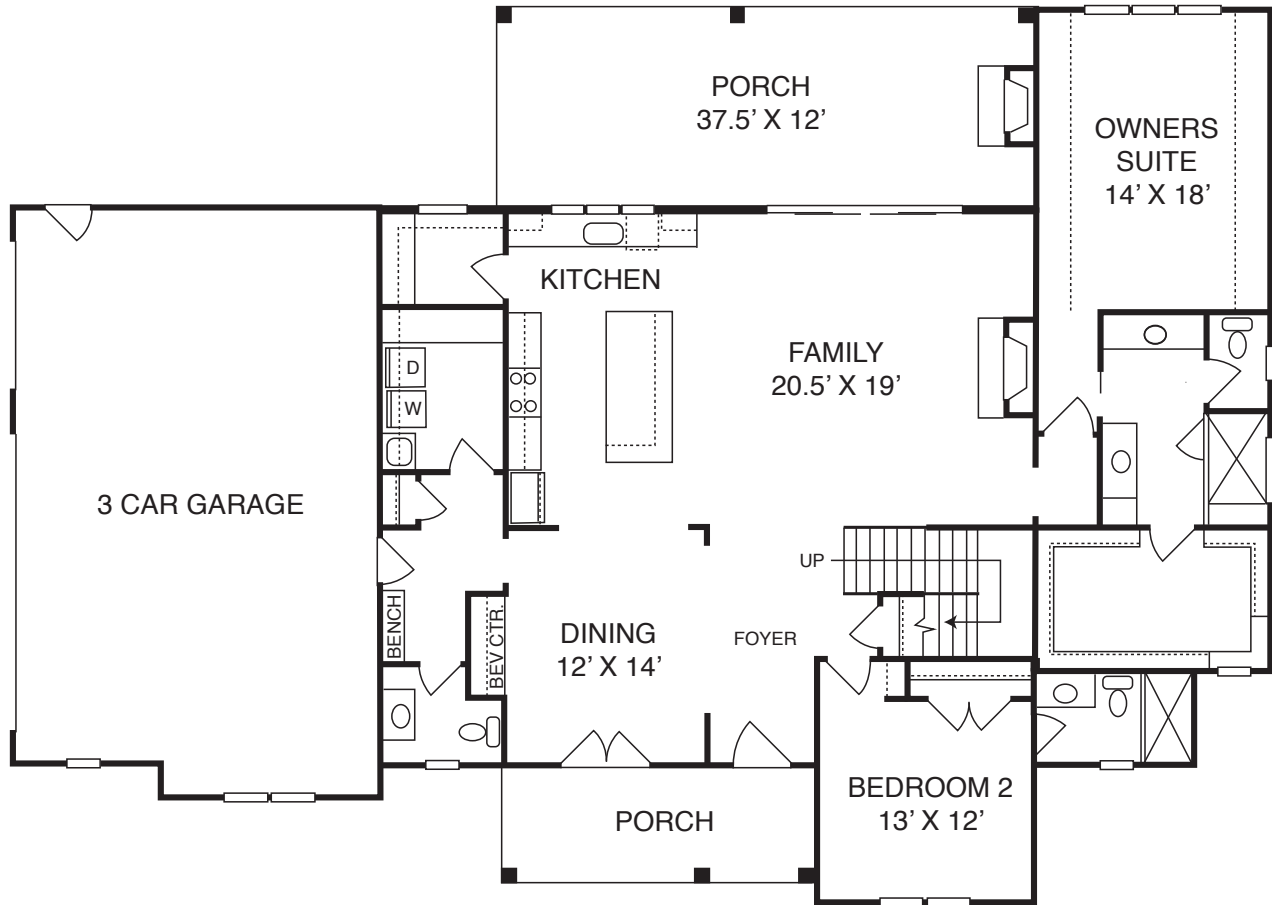
[www.SeaforthLandingNC.com](http://www.SeaforthLandingNC.com)

– BY APPOINTMENT ONLY –

919.926.5504 • [SeaforthLanding@FMBnewhomes.com](mailto:SeaforthLanding@FMBnewhomes.com)

**FMB**  
FONVILLE MORISEY BAREFOOT





## Poythress Construction

### Homesite 6A – 2318 Seaforth Road